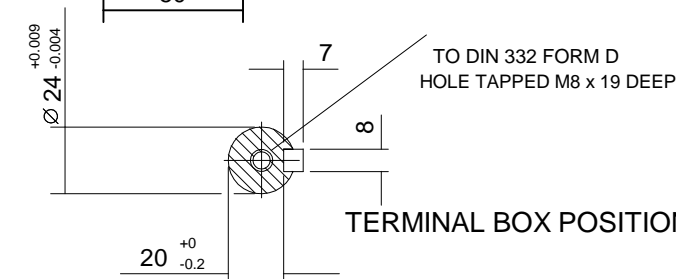
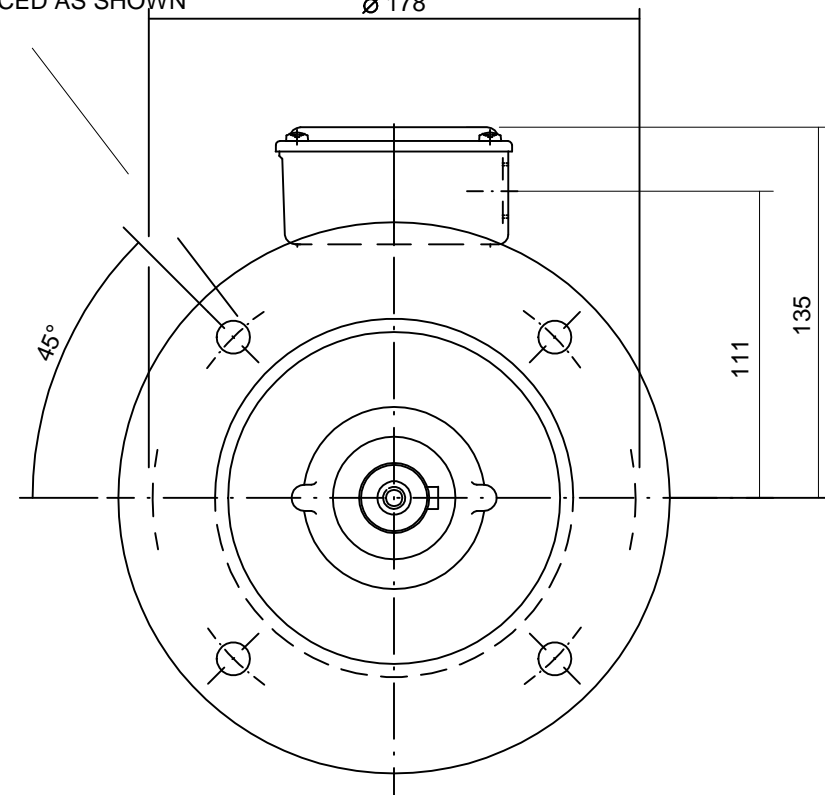
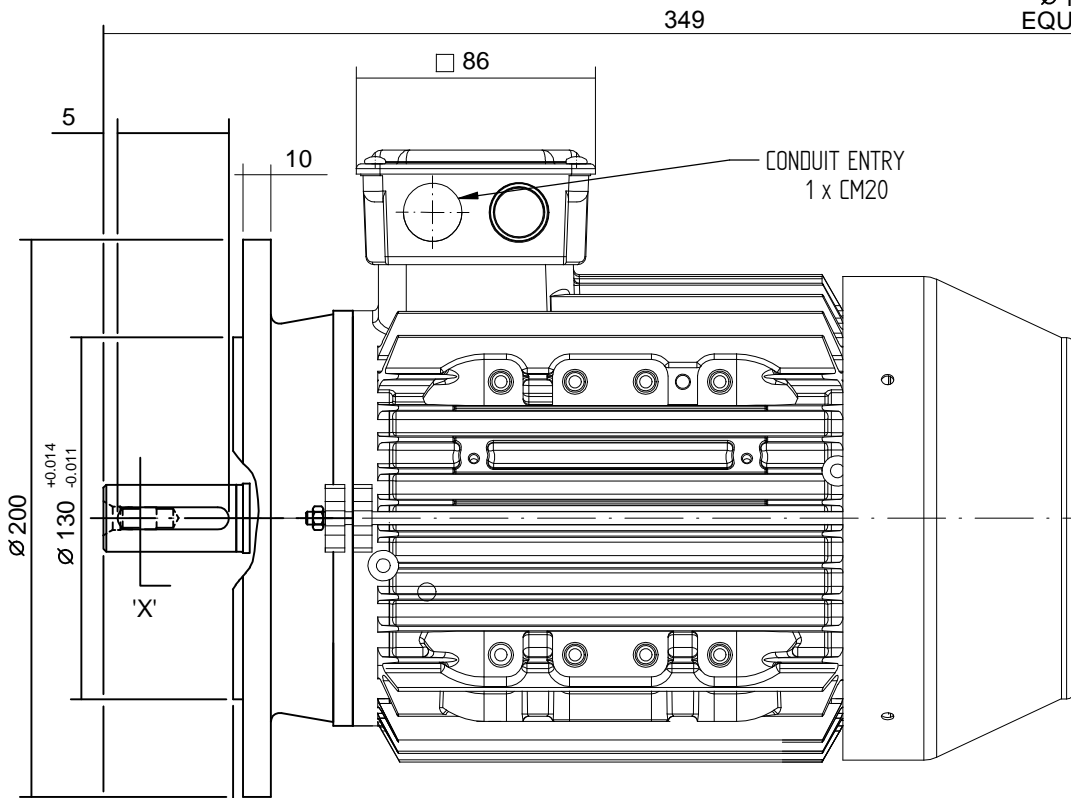


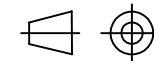
4 HOLES DRILLED
Ø 12 ON A 165 P.C.D.
EQUI-SPACED AS SHOWN



TERMINAL BOX POSITION : - CAN BE ARRANGED AT EITHER 9, 12 OR 3 O'CLOCK BY MOVING FEET.
STANDARD TERMINAL BOX POSITION IS 12 O'CLOCK AS SHOWN.
CONDUIT ENTRIES:- TERMINAL BOX CAN BE ROTATED AT 90° INTERVALS
(CONDUIT ENTRY POSITION SHOWN FOR ILLUSTRATION ONLY).

SECTION ON 'X'

ALL DIMENSIONS IN MILLIMETRES



FIRST ANGLE
PROJECTION

**BROOK
CROMPTON**

Produced by **Tamel s.a.** a company of **NTB** Technology in Motion

DRG. No. Q90GD00011

DRG. REF.

REVISION: DATE

SHEET
SIZE
A3

TITLE
OUTLINE DIMENSION DRAWING W ALUMINIUM IRON TOTALLY ENCLOSED FAN COOLED
90SX/LX FRAME D FLANGE MOUNTED MOTOR

	NAME	DATE
DRAWN	JM	09-08-10
CHECKED	KC	09-08-10
SCALE	NTS	